

BASE DA BOMBA
DISPENSER BASE
BASE DE LA POMPE

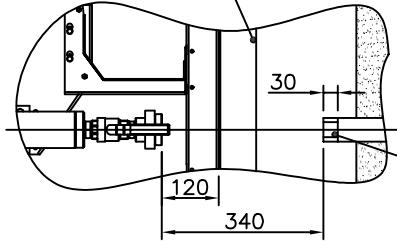
ANILHA PLANA M6
PLANE WASHER M6
ANNEAU PLAT M6

PARAF. CAB. SEXT. M6x16
HEX. HEAD SCREW M6x16
VIS A TÊTE SIXPANS M6x16

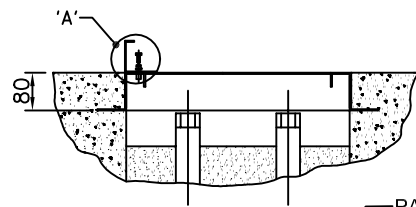
ANILHA PRESSAO M6
SPRING LOCK WASHER M6
ANNEAU PRESSION M6

Pormenor 'A'
Detail 'A'

EXEMPLO SUBMERSIVEL ADBLUE
ADBLUE SUBMERGE EXAMPLE
EXEMPLE SUBMERSIBLE ADBLUE



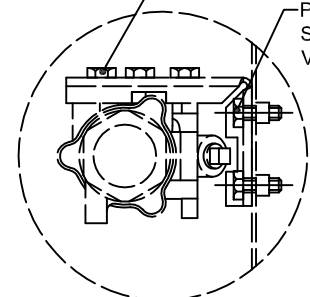
LIGAÇÃO ADBLUE DEVE SER FEITA
EM AÇO INOX, PVC OU UPP Ø1"
ADBLUE CONNECTION SHOULD BE
MADE IN ST. STEEL, PVC OR UPP Ø1"



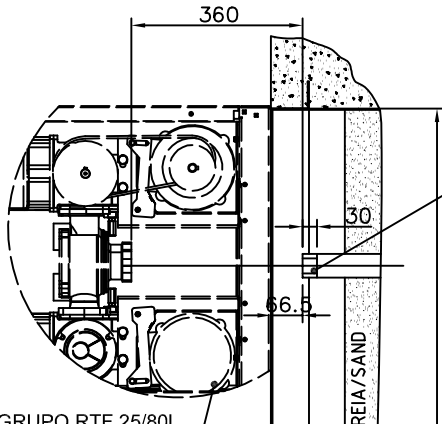
PARAF. M8
SCREW M8
VIS M8

PARAF. M6
SCREW M6
VIS M6

Pormenor 'B'
Detail 'B'



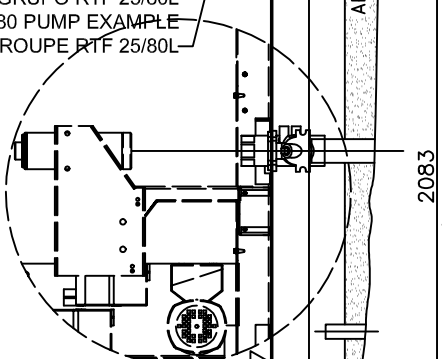
360



Ø1.1/2" ROSCADO
Ø1.1/2" THREADED

ASPIRAÇÃO ADBLUE Ø1"
ADBLUE SUCTION Ø1"
ASPIRATION ADBLUE Ø1"
(OPÇÃO/OPTIONAL/OPTION)

EXEMPLO GRUPO RTF 25/80L
RTF 25/80 PUMP EXAMPLE
EXEMPLE GROUPE RTF 25/80L



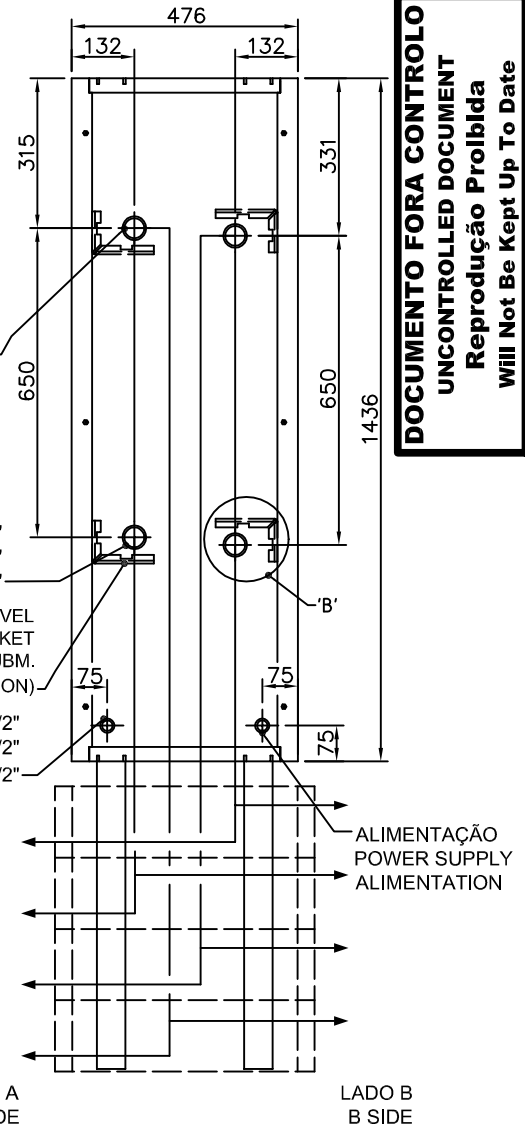
ASPIRAÇÃO Ø1.1/2"
SUCTION Ø1.1/2"
ASPIRATION Ø1.1/2"

SUPOORTE DA VALVULA SUBMERSIVEL
SUBMERGE VALVE BRACKET
SUPOORTE DE LA SOUPAGE SUBM.
(OPÇÃO/OPTIONAL/OPTION)

RECUP. VAPORES Ø1/2"
VAPOR RECOVERY Ø1/2"
RECUPERATION VAPEURS Ø1/2"

EXEMPLO DE SUBMERSIVEL
SUBMERGE EXAMPLE
EXEMPLE DE SUBMERSIBLE

NIVELAR PELA BASE
BASE LEVELLED
NIVELER PAR LA BASE



DOCUMENTO FORA CONTROLO
UNCONTROLLED DOCUMENT
Reprodução Proibida
Will Not Be Kept Up To Date

LADO A
A SIDE

LADO B
B SIDE

Designação/Description: FUNDAÇÃO EURO 5000 VI 4 PRODUTOS EURO 5000 VI 4 PRODUCTS FOUNDATION	Desenho nº: Drawing nr: B05-0081	Rev.: e	Codigo de Fabrico Production Code:	Codigo de Compra Purchase Code:	
Equipamento / Model: E5000VI	 Petrotec, S.A. Parque Industrial Pav. C2 S. João de Ponte 4805 - 661 Guimarães PORTUGAL	Des. Drg. By 17-12-08	Data/Date 17-12-08	Nome/Name LMagalhaes	Escala Scale //
Material:		Verif. Chd 22-12-08	22-12-08	JMarques	
Acabamento / Finish:		Substituído por: Replaced by:	Substituído por: Replaces		