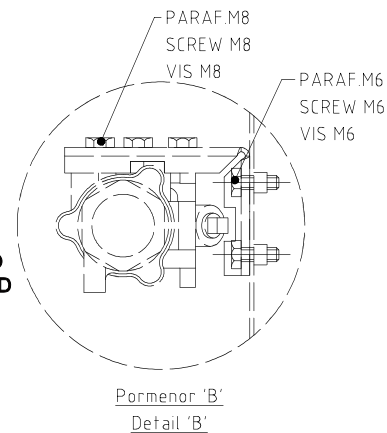
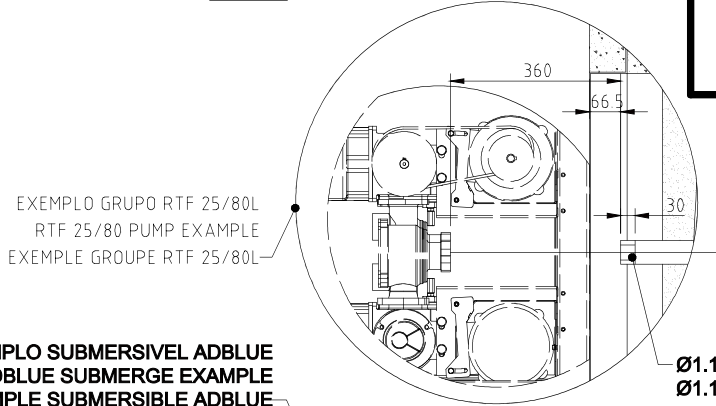
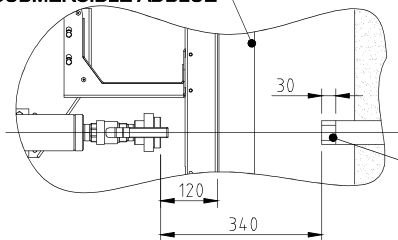


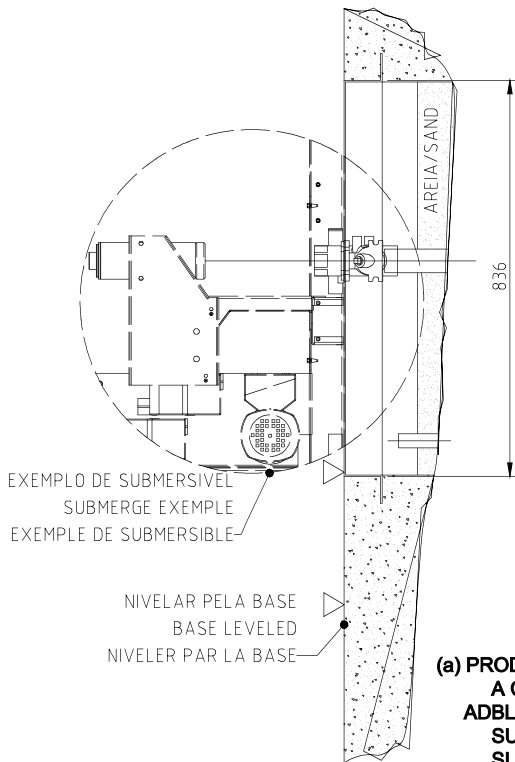
**DOCUMENTO FORA CONTROLO  
UNCONTROLLED DOCUMENT  
Reprodução Proibida  
Will Not Be Kept Up To Date**



**EXEMPLO SUBMERSIVEL ADBLUE  
ADBLUE SUBMERGE EXAMPLE  
EXEMPLE SUBMERSIBLE ADBLUE**

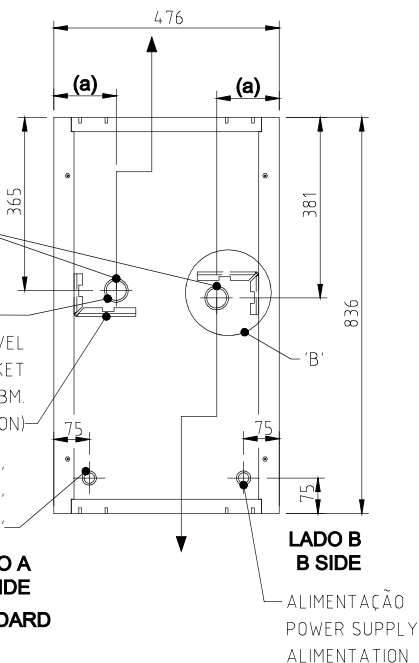


**LIGAÇÃO ADBLUE DEVE SER FEITA  
EM AÇO INOX, PVC OU UPP Ø1.1/2"  
ADBLUE CONNECTION SHOULD BE  
MADE IN ST. STEEL, PVC OR UPP Ø1.1/2"**



**ASPIRAÇÃO ADBLUE Ø1"  
ADBLUE SUCTION Ø1"  
ASPIRATION ADBLUE Ø1"  
(OPÇÃO/OPTIONAL/OPTION)**

ASPIRAÇÃO Ø1.1/2"  
SUCTION Ø1.1/2"  
ASPIRATION Ø1.1/2"  
SUPORTE DA VALVULA SUBMERSIVEL  
SUBMERGE VALVE BRACKET  
SUPPORTE DE LA SOUPAGE SUBM.  
(OPÇÃO/OPTIONAL/OPTION)  
RECUP. VAPORES Ø2"  
VAPOR RECOVERY Ø2"  
RECUPERATION VAPEURS Ø2"



**(a) PRODUTOS STANDARD / PRODUCTS STANDARD  
A COTA É 132 / THE DIMENSION IS 132  
ADBLUE  
SUBMERSIVEL A COTA É 132  
SUBMERGE THE DIMENSION IS 132  
COM GRUPO A COTA É 185  
WITH SUCTION PUMP IS 185**

<b>Designação/Description:</b> <b>FUNDAÇÃO EURO 1500/2000 VI DUPLA</b> <b>EURO 1500/2000 VI DUAL FOUNDATIONS</b>	<b>Desenho nº:</b> <b>Drawing nr:</b> <b>B05-0097</b>	<b>Rev.:</b> <b>c</b>	<b>Codigo de Fabrico</b> <b>Production Code:</b>		<b>Codigo de Compra</b> <b>Purchase Code:</b>	
			<b>Equipamento / Model:</b> E1500VI / E2000VI	 Petrotec, S.A. Parque Industrial Pav. C2 S. João de Ponte 4805 - 681 Guimarães PORTUGAL	<b>Data/Date</b> 20-12-2007	<b>Nome/Name</b> LMagalhaes
<b>Material:</b>	<b>Substituido por:</b> <b>Replaced by:</b>		<b>Substitui</b> <b>Replaces</b>		<b>Toler.</b> >315 ±1 >120 - 315 ±0.5 >30 - 120 ±0.3 >6 - 30 ±0.2 0,5 - 6 ±0.1	
<b>Acabamento / Finish:</b>						